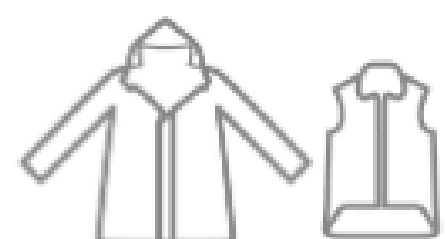


GARMENT FITTING SIZE MEASUREMENTS

HEIGHT		Weight KG:	60	65	70	75	80	85	90	95	100	105	110	115	120	125	130	135+
cm	Feet&Inches																	
152	5'	S	S	M	M	L	XL	2XL										
157	5'2"	S	S	M	M	L	XL	2XL										
163	5'4"	S	S	M	M	L	XL	2XL										
168	5'6"	S	S	M	M	L	L	XL	2XL									
173	5'8"			M	M	M	L	L	XL	XL	2XL	2XL	2XL	2XL	3XL	2XL	2XL	3XL
178	5'10"			M	L	L	L	L	XL	XL	3XL	2XL	2XL	3XL	3XL	3XL	2XL	2XL
183	6'			L	L	L	L	L	XL	XL	3XL	3XL	4XL	4XL	5XL	3XL	3XL	3XL
188	6'2"				XL	XL	XL	XL	XL	XL	4XL	4XL	4XL	5XL				
193	6'4"							2XL	2XL	2XL								
198	6'6"								3XL	3XL								5XL

The tables below may also be useful in finding your correct fit.

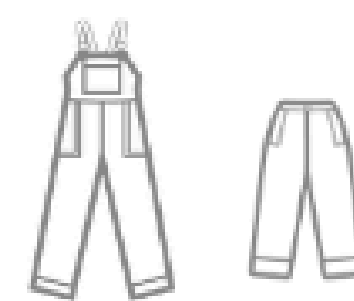
Please Note: The measurements listed allow for the Parka and Over-Trousers to be worn over a layer of conventional warm clothing, .i.e. Thick wool jersey & jeans



PARKA & VEST GUIDE

(measured over normal warm clothing)

SIZE	Chest in cm	Chest in inches
S	83 - 90	32 - 35
M	91 - 98	35 - 38.5
L	99 - 106	38.5 - 42
XL	107 - 114	42 - 45
2XL	115 - 122	45 - 48
3XL	123 - 130	48 - 51
4XL	131 - 138	51 - 54
5XL	139 - 144	54 - 57



OVER-TROUSERS GUIDE

(measured over normal warm clothing)

SIZE	Waist in inches	
S	71 - 78	28 - 30.5
M	79 - 86	30.5 - 34
L	87 - 94	34 - 37
XL	95 - 102	37 - 40
2XL	103 - 110	40 - 43
3XL	111 - 118	43 - 46.5
4XL	119 - 126	46.5 - 49.5
5XL	127 - 135	49.5 - 53